



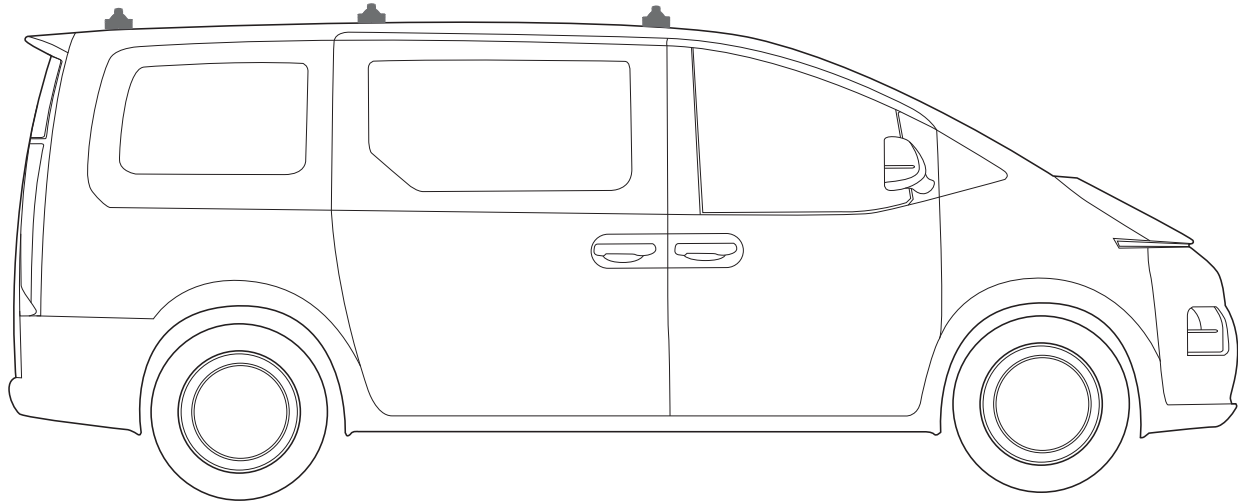
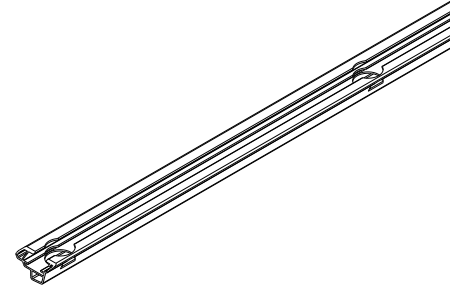
'Tradie Tuff'

COMMERCIAL ROOF RACKS

HYUNDAI Staria Load, 2021 - ON

TRACK MOUNT

PART NUMBER: VAS.RC1230, VAS.RA1230.



Note:

- PLEASE READ INSTRUCTIONS AND CHECK CONTENT PRIOR TO INSTALLING.
- PLACE INSTRUCTIONS IN VEHICLES GLOVE COMPARTMENT AFTER INSTALLING.



3 Bar maximum capacity: 125kg
 2 Bar maximum capacity: 125kg
Tested to AS/NZS 1235-2000 ADR standards

- Please check your vehicle's manual for vehicle load capacity (please do not exceed the lowest load rating) and please download and read our Load Rating guide which can be found on our website vas.com.au.
- Load rating is based on driving on sealed roads to road conditions and includes weight of roof rack system.

Important information

- Complete maintenance checks weekly including bolt connections and tightness.
- Heavy loads carried near feet
- Overhanging loads should conform to relevant state laws
- Check tie down strap tension every 50klm as loads can shift
- Specialised equipment carriers such as ladder slides should be used
- Ensure your roof racks, ladder rails and or load does not inhibit the tailgate lifting on vehicles manufactured with these doors
- Check car park heights before entering
- Keep load under the maximum capacity
- Use non stretch fastening straps
- Remove roof racks prior to using an automatic car wash

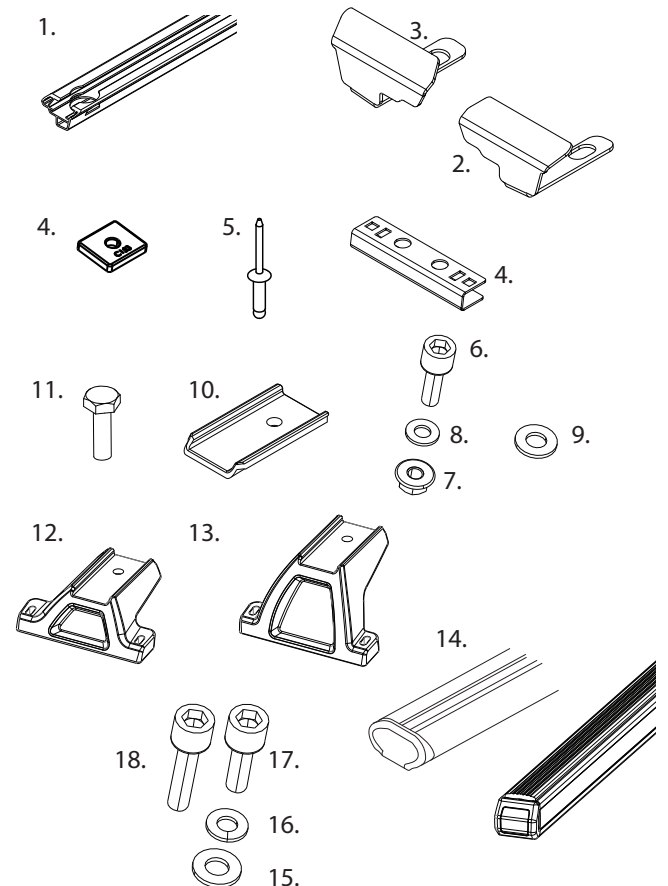
Note: The handling characteristics of a vehicle will change when a carrier system is fitted. Driving technique such as speed reduction, cornering techniques and braking distances should be altered to allow for these changes.

Kit Inclusions

Item	Part (3 bar track mount shown)	Qty
1	Hyundai Track (pair) - C573	1
2	Track End Cap FR RL - C674R	2
3	Track End Cap FL RR - C674L	2
4	Middle Mount Bracket - (C510)	2
5	Track Rivet - F022	4
6	M5 Cap Screw - F074	12
7	M5 Flanged Nut - F040	12
8	M5 Flat Washer - F041	12
9	M5 x 10mm Flat Washer - F042	12
10	10mm Leg Height Spacer - C123	2
11	M10 x 35mm Hex Bolt - F027	2
12	45mm Leg Mount - CL45	2
13	80mm Leg Mount - CL80	4
14	CB1650 or AB1650 crossbars	3
15	M6 x Flat Washer - F011	16
16	M6 Spring Washer - F012	16
17	M6 x 12mm Screw - F004	4
18	M6 x 30mm Screw - F008	12
19	Track Channel Nuts - C153	12

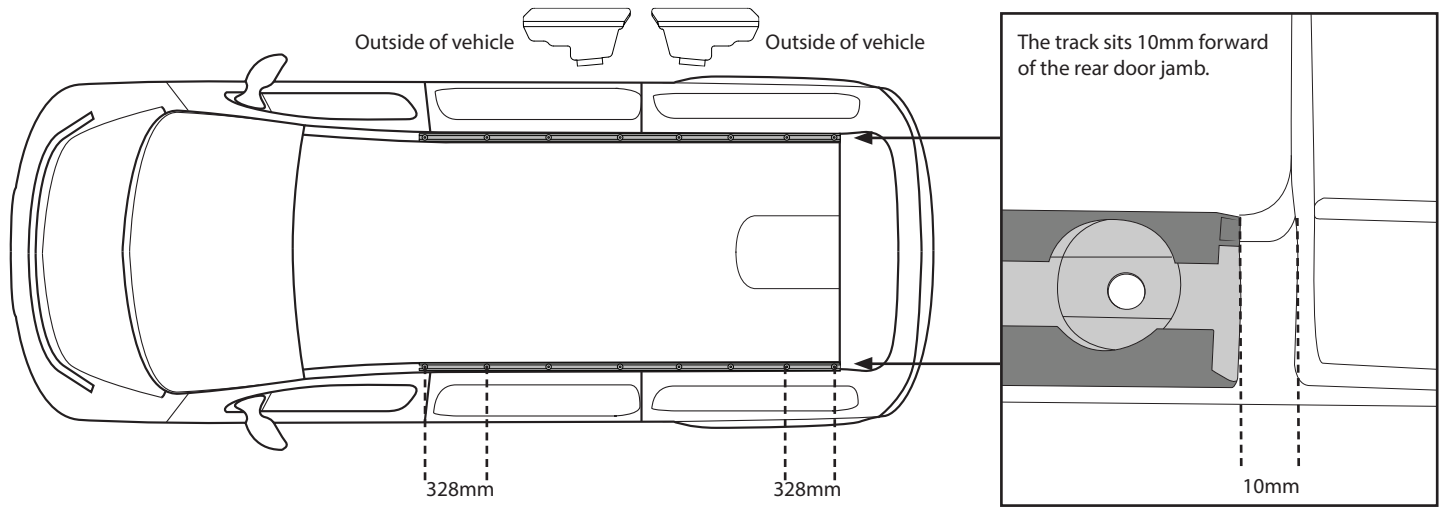
Tools Required

- | | |
|--------------------------------|-----------------------|
| 1 - Power Drill. | 9 - 8mm Ring Spanner. |
| 2 - Drill Depth Guide. | 10 - 3mm Allen Tool. |
| 3 - Cold Galvanising Paint. | 11 - Masking Tape. |
| 4 - Butyl Mastic. | 12 - Tape Measure. |
| 5 - Vacuum. | 13 - Centre punch. |
| 6 - 5mm Drill Bit. | |
| 7 - Pneumatic Rivet Gun. | |
| 8 - 4mm Allen Tool (provided). | |



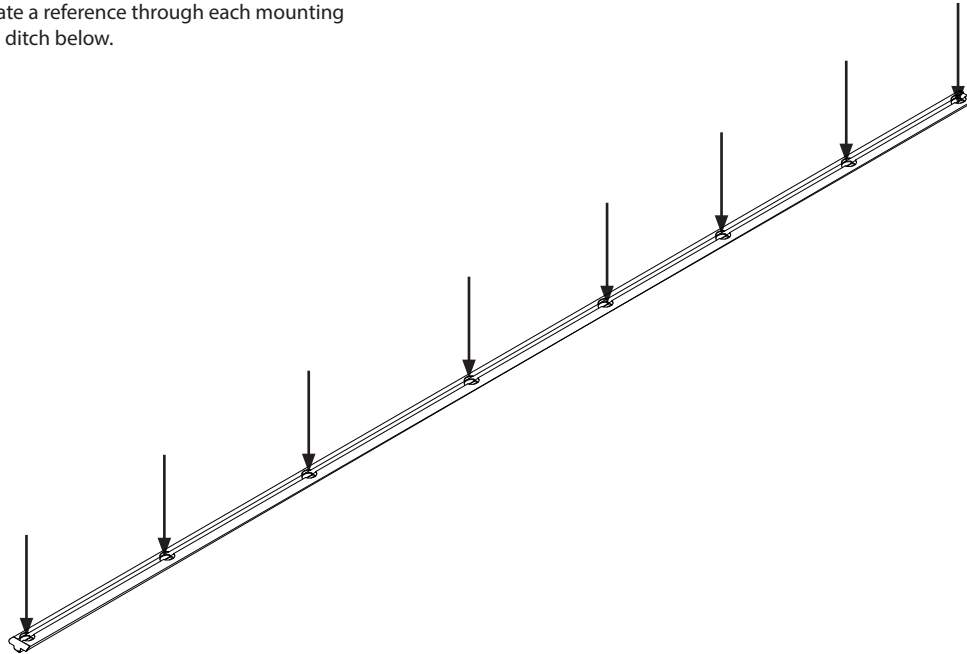
Step 1

Place the tracks into the roof ditch. Track orientation can be determined by placing the overhang section of track, above the roof ditch filler.



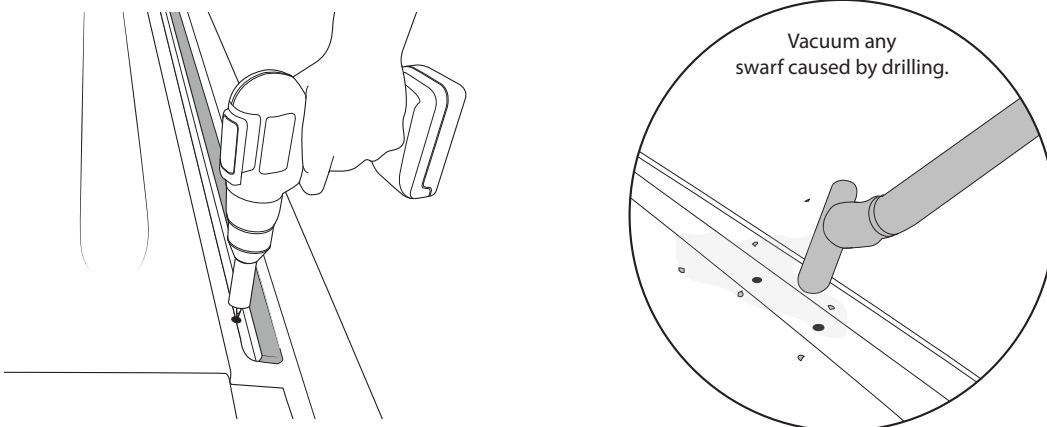
Step 2

Using a centre punch, create a reference through each mounting hole in the track, onto the ditch below.



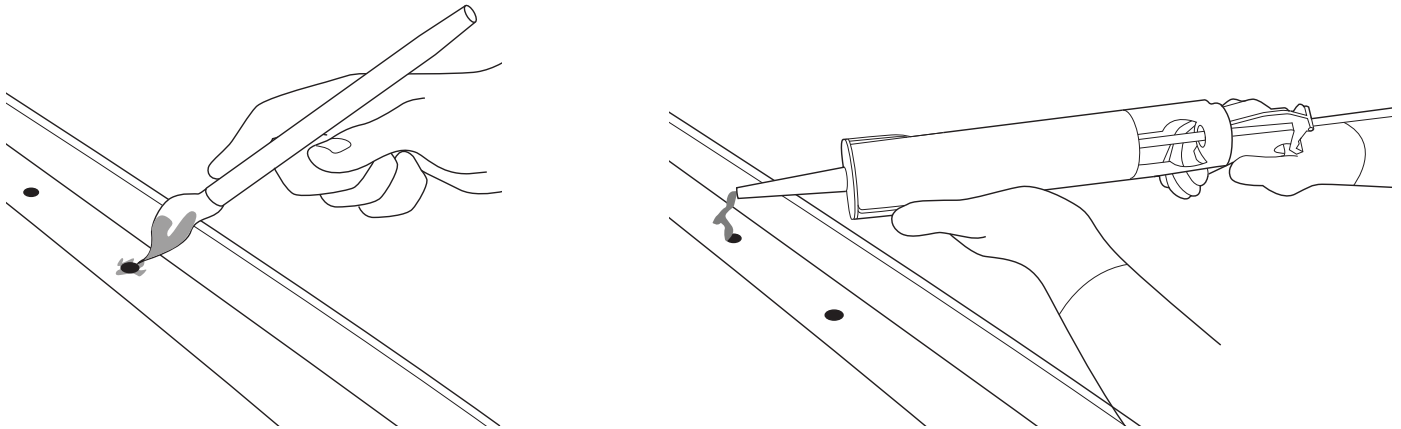
Step 3

Remove the track from the ditch. Using a 5mm bit and a stop set to 10mm, drill through all references made.



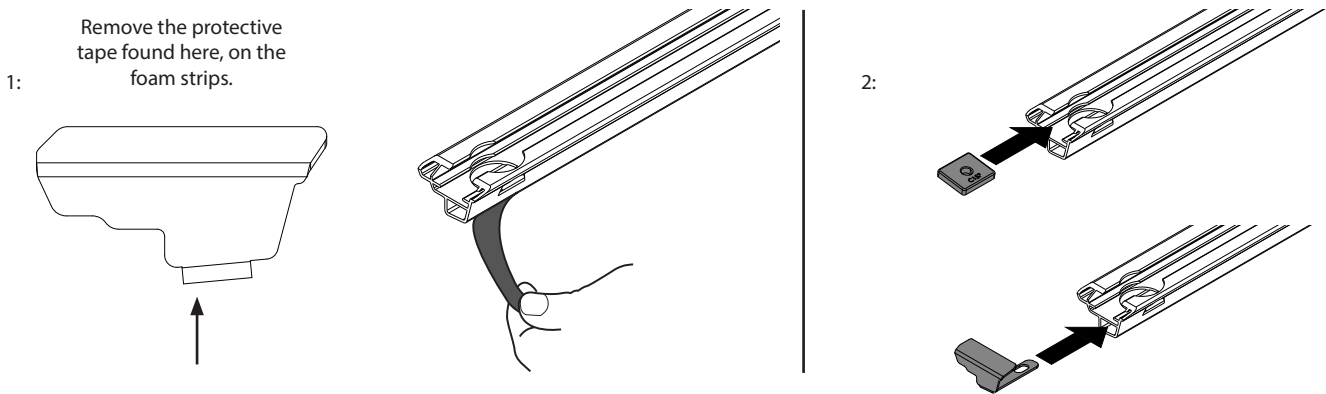
Step 4

Apply cold galvanising paint to the holes drilled. Allow time to dry. Using butyl mastic, apply a water seal to the holes drilled.



Step 5

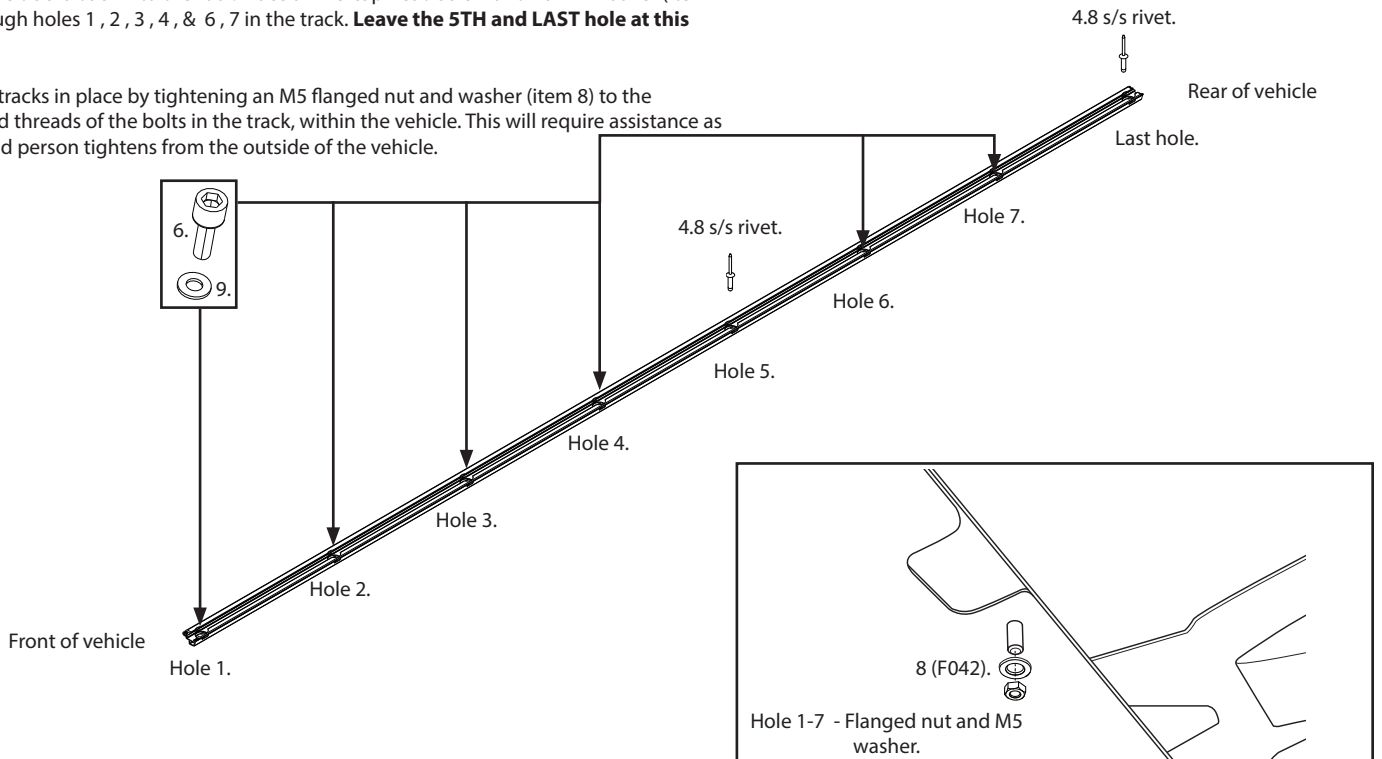
(1) Remove the backing tape from the tracks. (2) Insert 6x square nuts into each track. Place end caps into place.



Step 6

Place the tracks back into the roof. Place an M5 cap head screw and 10mm washer (item 9) through holes 1, 2, 3, 4, & 6, 7 in the track. **Leave the 5TH and LAST hole at this stage.**

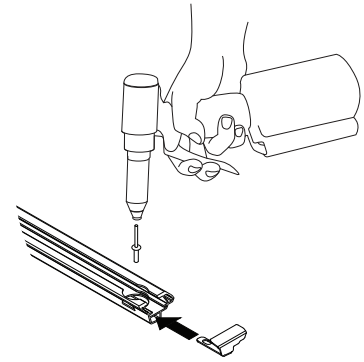
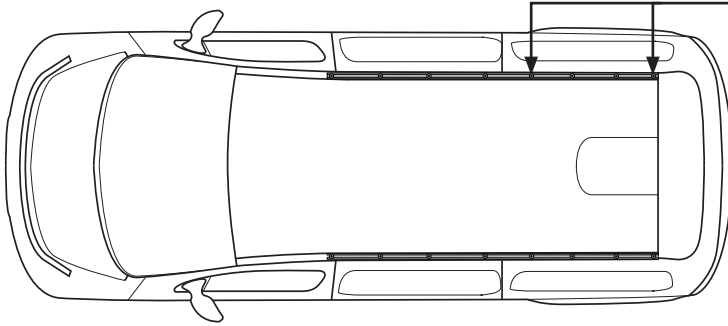
Fix the tracks in place by tightening an M5 flanged nut and washer (item 8) to the exposed threads of the bolts in the track, within the vehicle. This will require assistance as a second person tightens from the outside of the vehicle.



Step 7

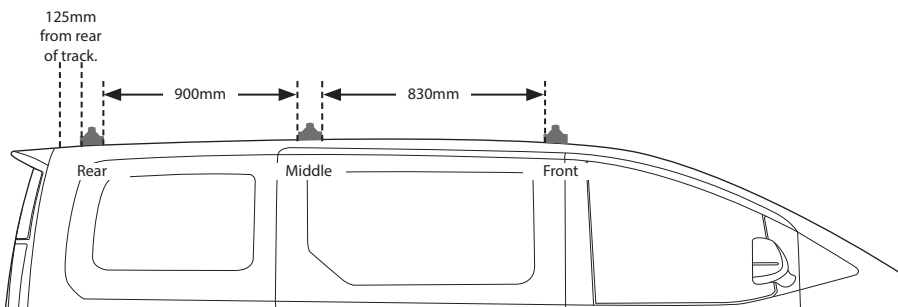
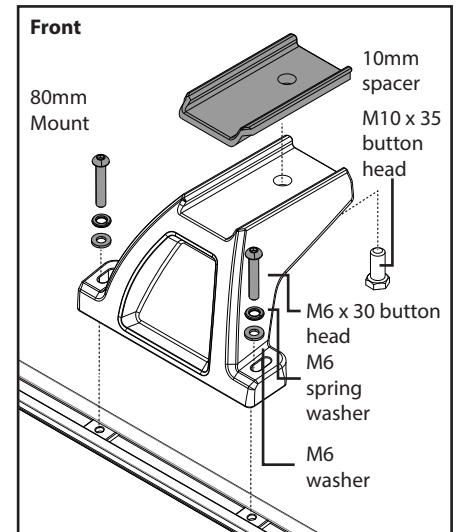
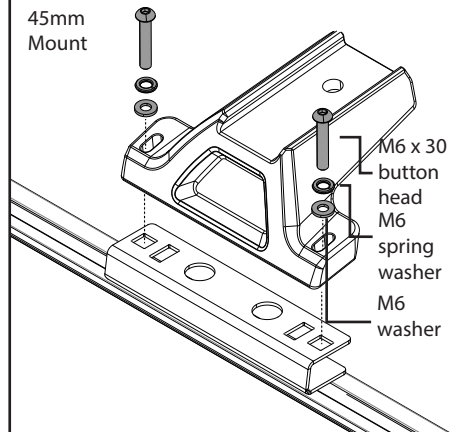
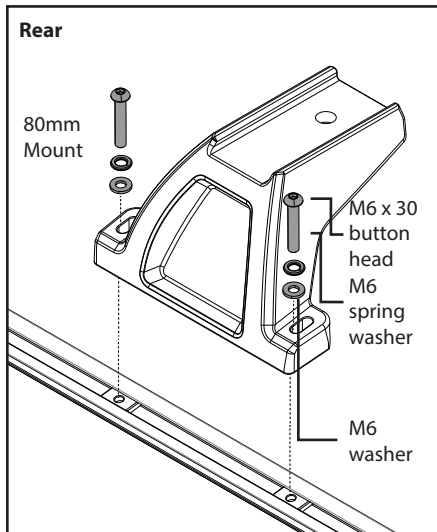
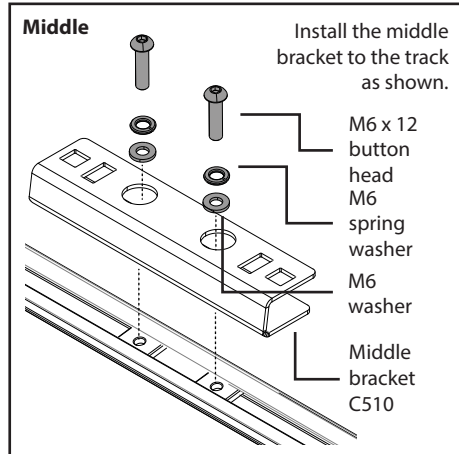
Use a pneumatic rivet gun and fix the remaining holes (5th and rear hole of the track) with the provided rivets.

NOTE: If the holes don't align due to poor positioning, do not elongate holes in the roof. The structural rivet is designed to have a maximum holding strength in a 4.8-5.0mm hole.



Step 8

Place the crossbar assemblies and spacers in position as shown.



Note:
Refer to Mount kit instruction (D-041), for details on crossbar fitment.

Channel nut is situated across the bar. Be aware of crossbar orientation. Curved edge to the top as seen.

