



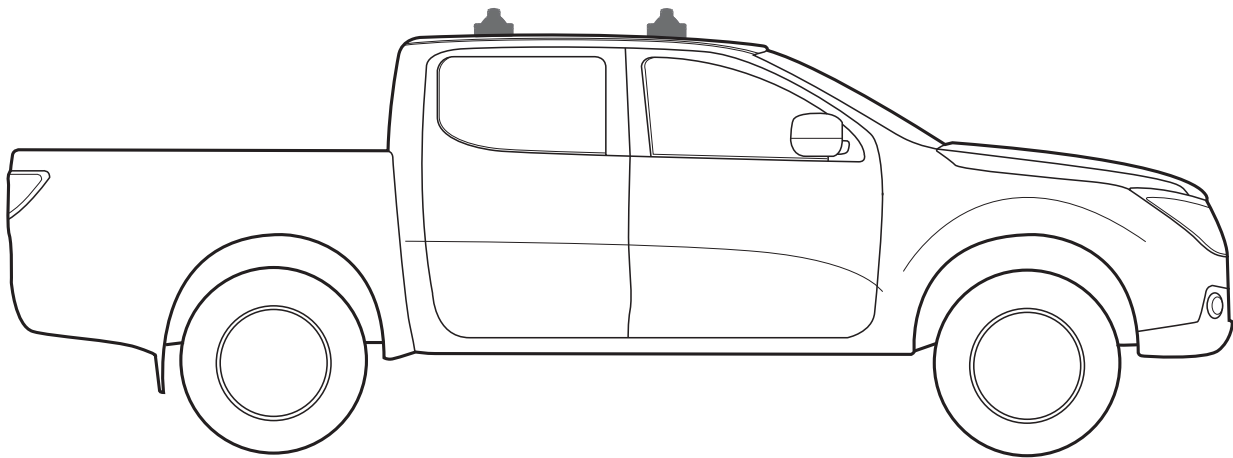
'Tradie Tuff'

COMMERCIAL ROOF RACKS

FORD RANGER, 11 - Current
MAZDA BT50, 11 - 20
TRACK MOUNT



PART NUMBER: VTS03



Note:

- PLEASE READ INSTRUCTIONS AND CHECK CONTENT PRIOR TO INSTALLING.
- PLACE INSTRUCTIONS IN VEHICLES GLOVE COMPARTMENT AFTER INSTALLING.



2 Bar maximum capacity: 100kg

Tested to AS/NZS 1235-2000 ADR standards

- Please check your vehicle's manual for vehicle load capacity (please do not exceed the lowest load rating) and please download and read our Load Rating guide which can be found on our website vas.com.au.
- Load rating is based on driving on sealed roads to road conditions and includes weight of the roof rack system.

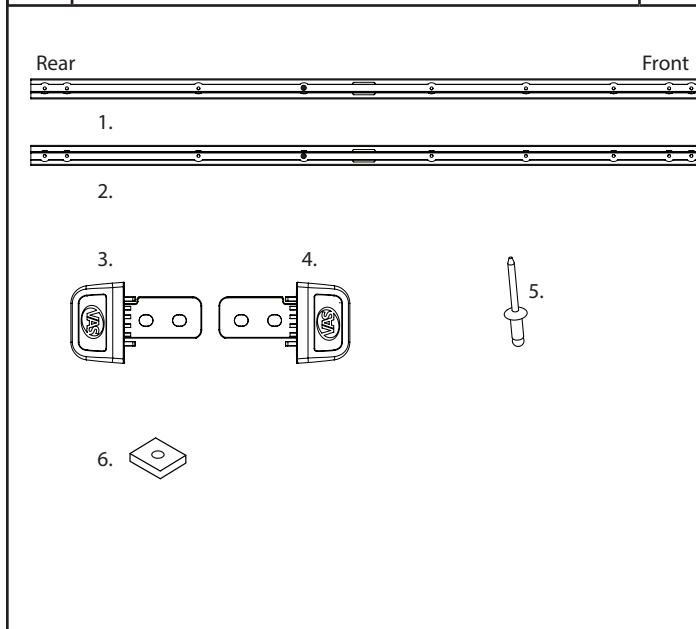
Important information

- Complete maintenance checks weekly including bolt connections and tightness.
- Heavy loads carried near feet
- Overhanging loads should conform to relevant state laws
- Check tie down strap tension every 50klm as loads can shift
- Specialised equipment carriers such as ladder slides should be used
- Ensure your roof racks, ladder rails and or load does not inhibit the tailgate lifting on vehicles manufactured with these doors
- Check car park heights before entering
- Keep load under the maximum capacity
- Use non stretch fastening straps
- Remove roof racks prior to using an automatic car wash

Note: The handling characteristics of a vehicle will change when a carrier system is fitted. Driving technique such as speed reduction, cornering techniques and braking distances should be altered to allow for these changes.

Kit Inclusions

Item	Part	Qty
1	Right Track - C322R	1
2	Left Track - C322L	1
3	FL/RR End Cap - C324	2
4	FR/RL End Cap - C325	2
5	Rivet - F022	18
6	M6 channel nut - C153	8

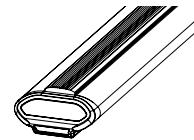


Tools Required

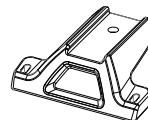
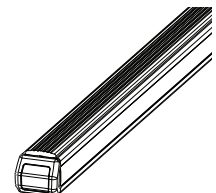
- 1 - Tape Measure.
- 2 - Drill and 5mm bit.
- 3 - Butyl Mastic Sealant.
- 4 - Cold Galvanising Paint.
- 5 - Vacuum.
- 6 - Drill Guide.
- 7 - Marker.
- 8 - Masking Tape.
- 9 - Rivet Gun.
- 10 - Dremel.
- 11 - Nylon scrape
- 12 - Rag.

Required kits (as separate):

Crossbar 1375mm or 1260mm
Crossbar Mount kit

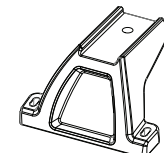


Or



45mm Mount

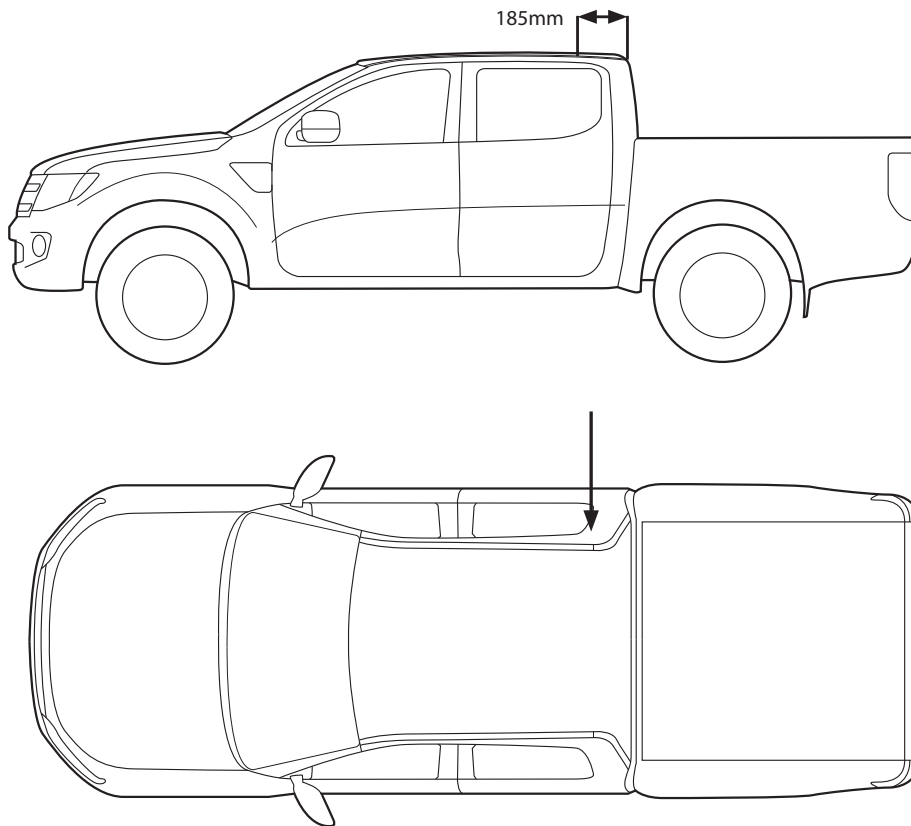
Or



80mm Mount

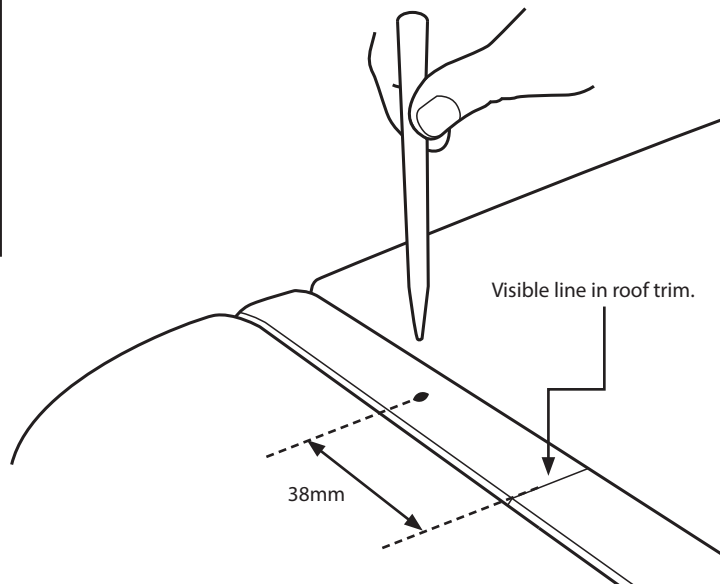
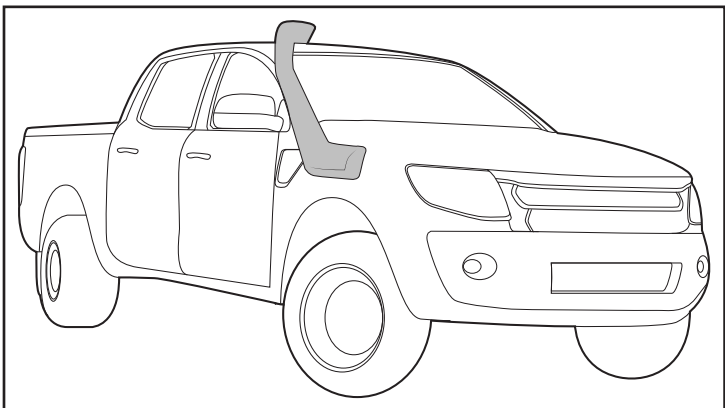
Step 1

On the roof trim, find the visible tool line 185mm from the rear of the vehicle.



Note

If a factory snorkel is fitted, measure backward from this trim line, 38mm.
Create a reference point with a marker.

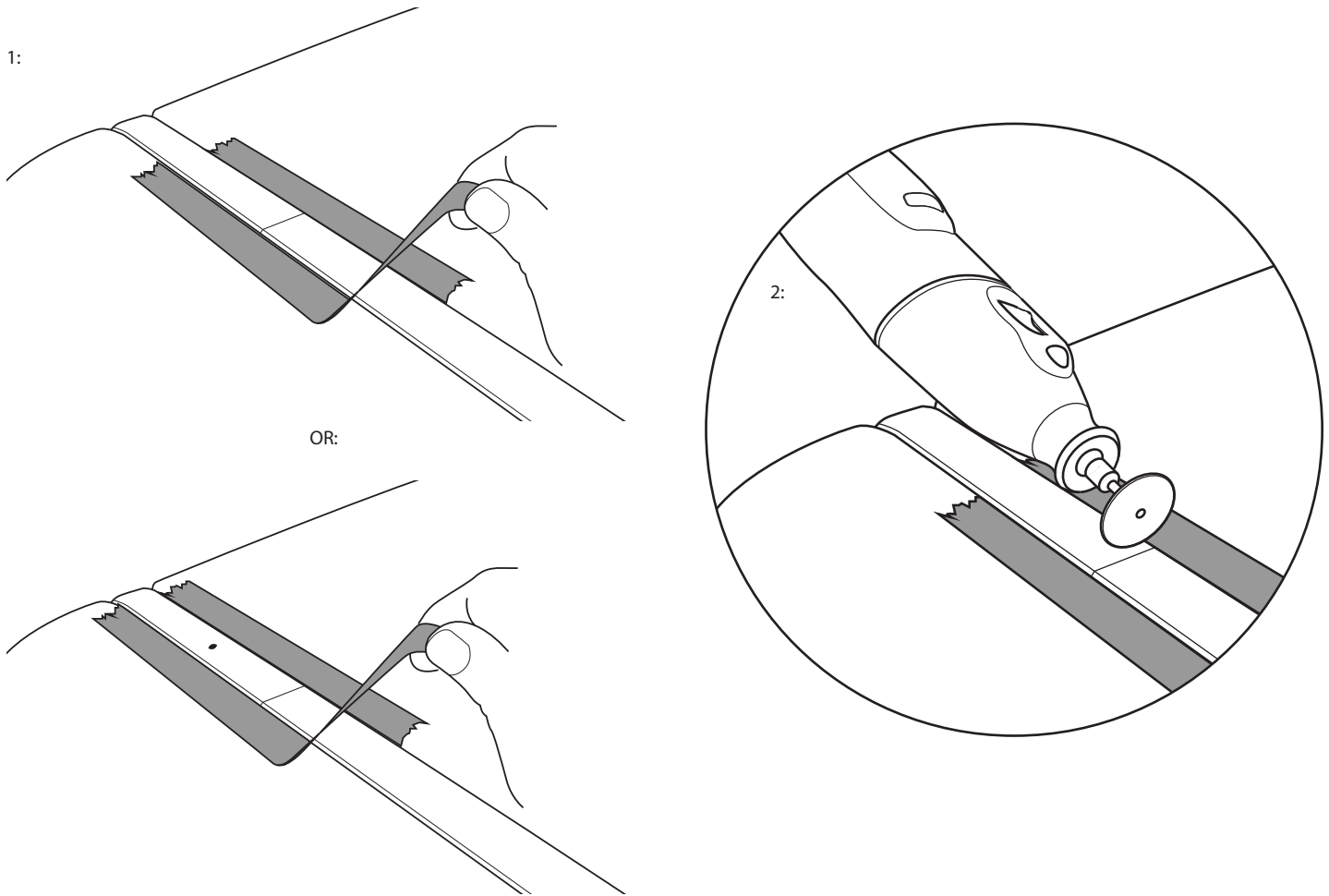


Step 2

1 - Using masking tape, line the outsides of the ditch, either side of the tool line (or the reference made on snorkel fitted models).

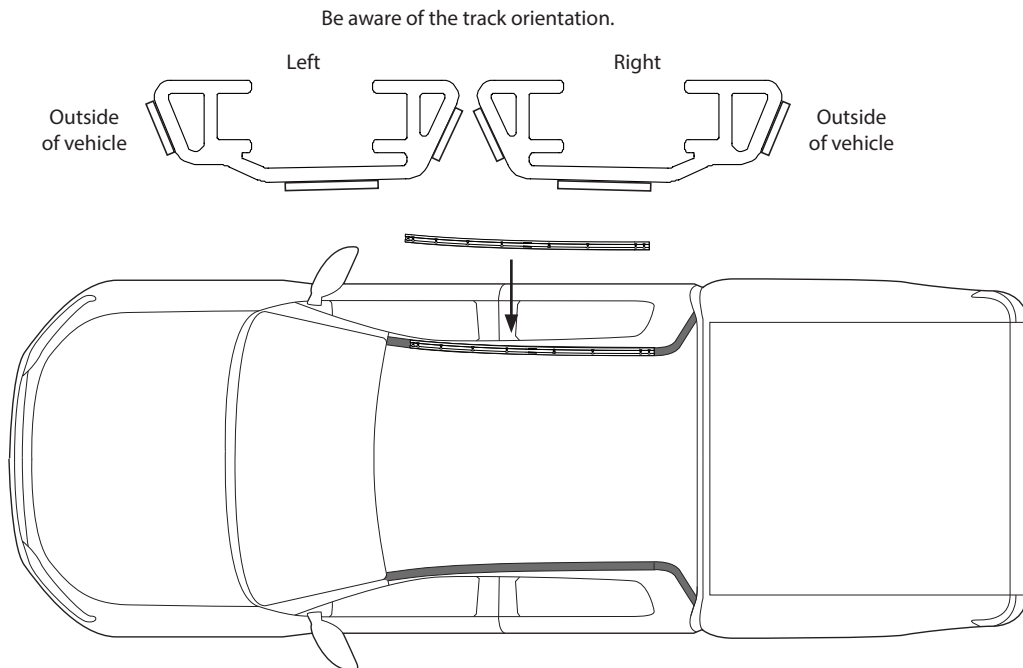
2 - With a few layers of tape either side, carefully cut through the ditch fill along the bracket width marks using a dremel.

Note - There is a metal line that runs through the ditch fill. Take care when cutting.



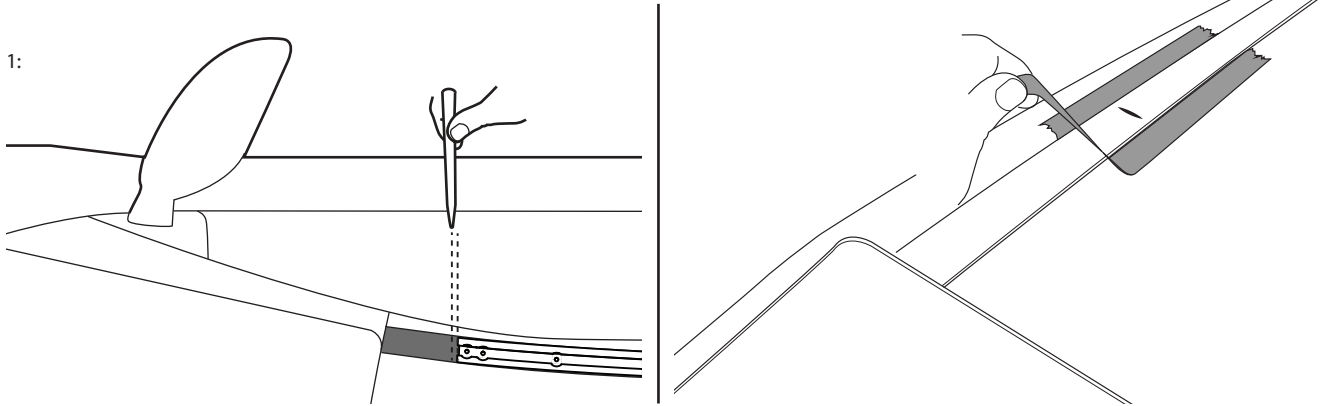
Step 3

Place the track over the trim in line with the cut made previous.



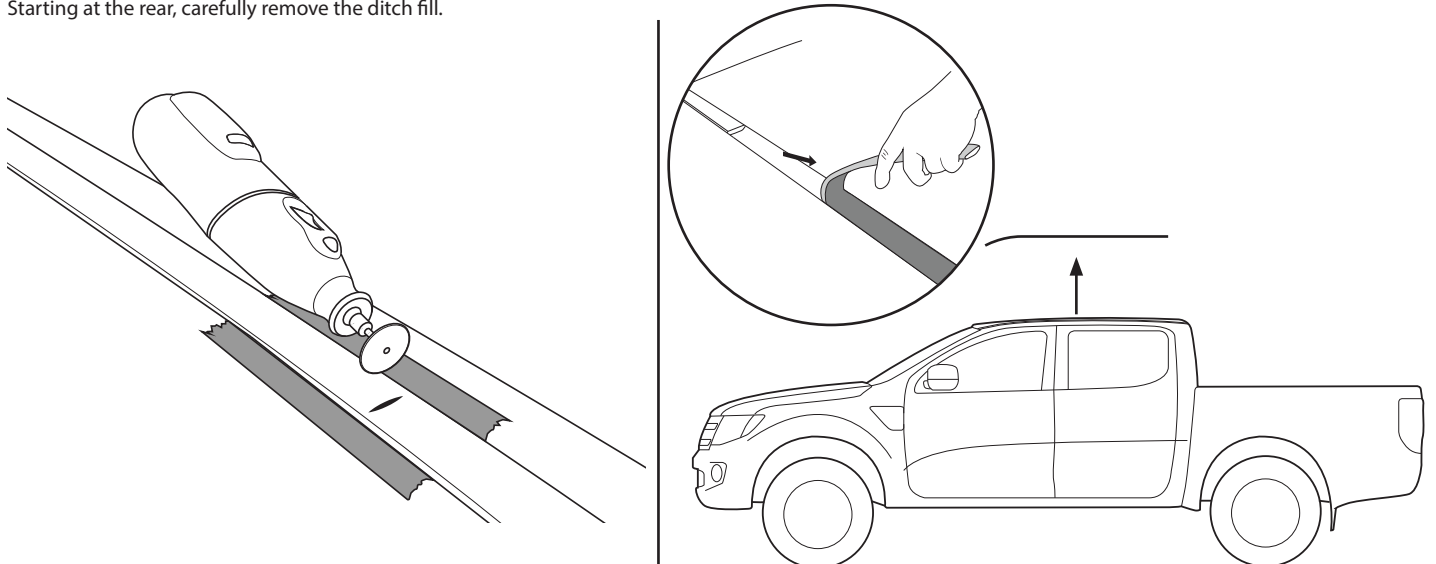
Step 4

- 1 - With the tracks in place, mark 4mm from the front of the track on the ditch trim.
- 2 - Place a few layers of masking tape either side of this mark.

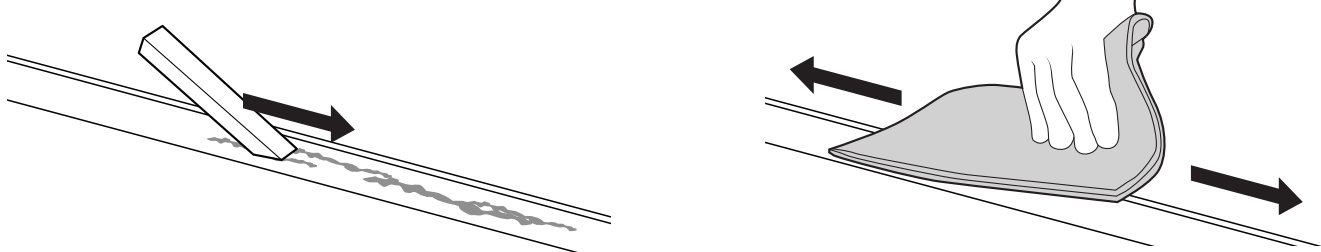


Step 5

Use the dremel and cut through the front of the trim at the reference made. Use caution and move slowly as to not damage the paint. Starting at the rear, carefully remove the ditch fill.



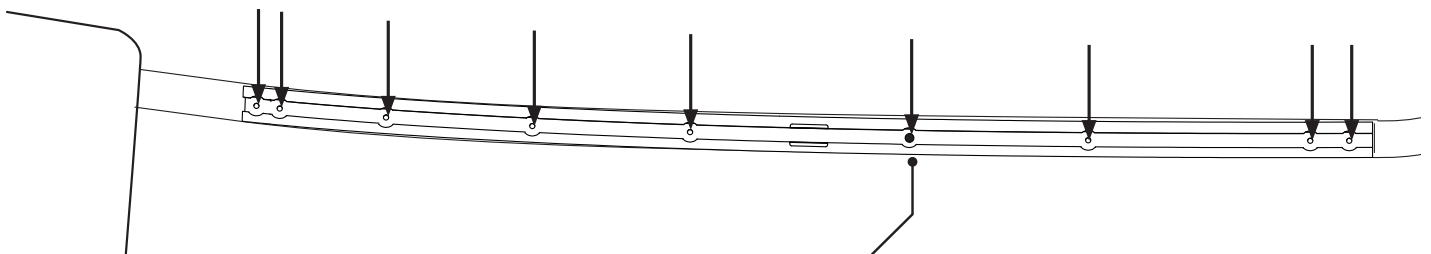
Note: Any material left in the ditch must be cleaned out before continuing. Use a nylon scrape to remove any double sided tape in the ditch. Follow this by a thorough clean with a rag.



Step 6

Place the tracks into the position within the cleared ditch. Use a marker or a 5mm drill bit to create references through all holes in the track.

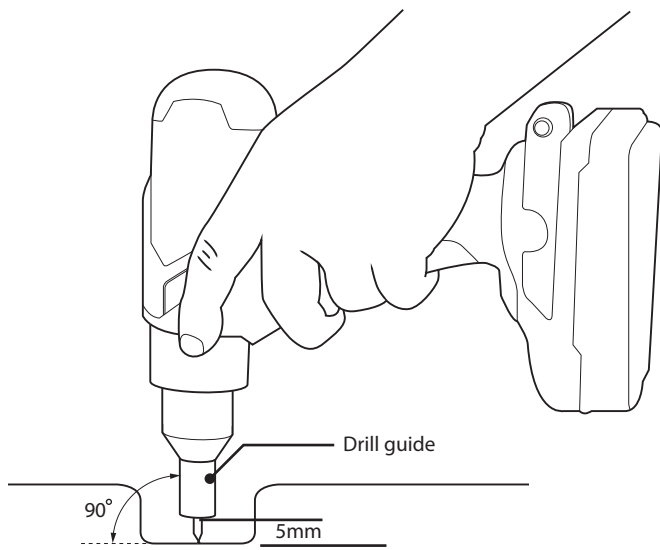
2:



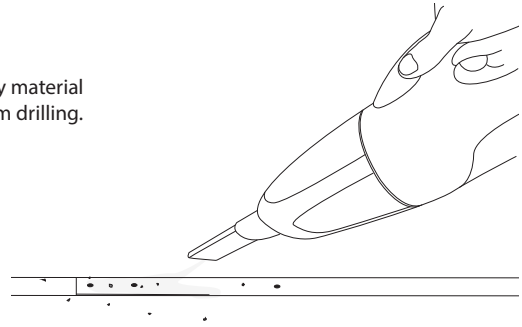
The hole to the rear of the cut out is covered with a black sticker. The sticker indicated the position of the factory airbag below. Take note of its location for the follow steps. Drill with care.

Step 7

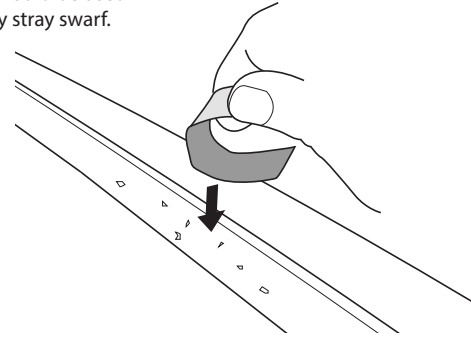
Using a 5mm drill bit, drill through all the marks made in step 6. **Note: a drill guide must fit and set to 5mm to avoid damaging airbags. Always drill slowly, checking regularly.**



Vacuum any material created from drilling.

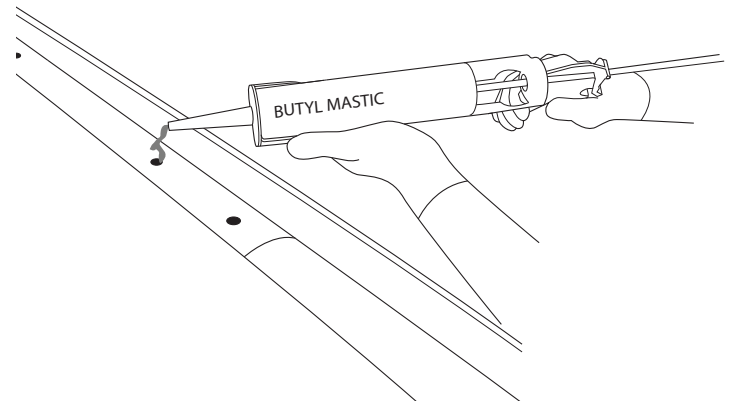
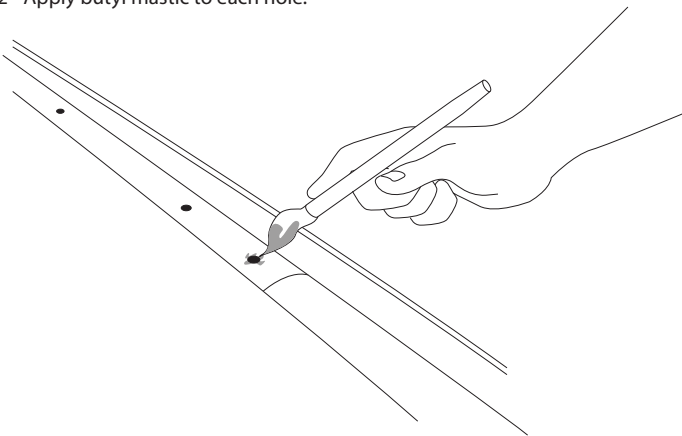


Masking tape should be used to pick up any stray swarf.



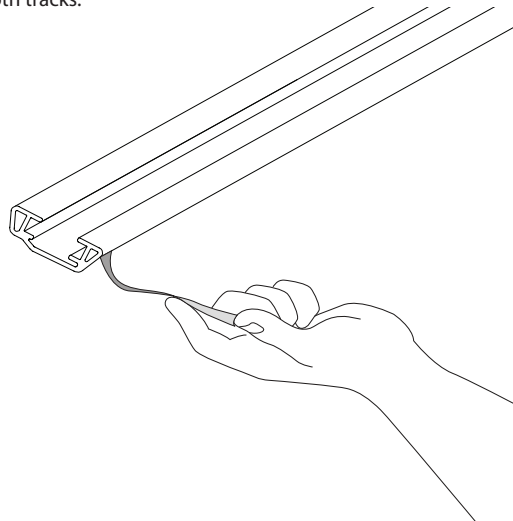
Step 7

- 1 - Apply cold galvanising paint to all the drilled holes. Allow at least 15min to dry depending on air temp.
- 2 - Apply butyl mastic to each hole.



Step 8

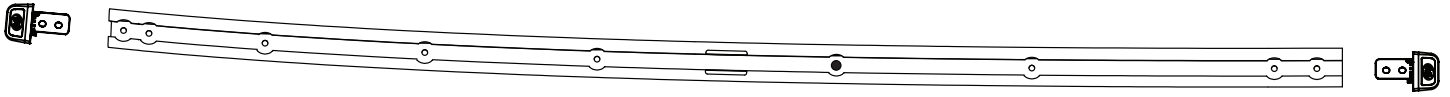
Remove the tape from the protective foam, on both tracks.



Step 9

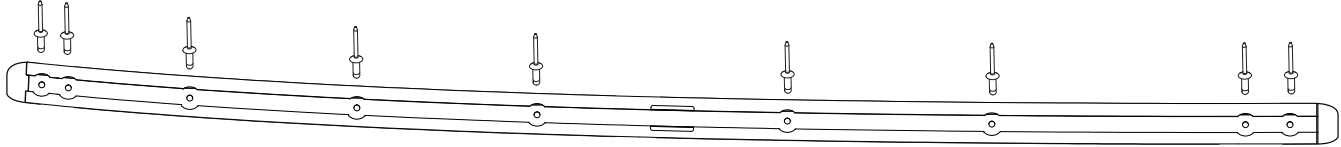
Place the end caps into the tracks.

FL/RR End Cap - C324
FR/RL End Cap - C325



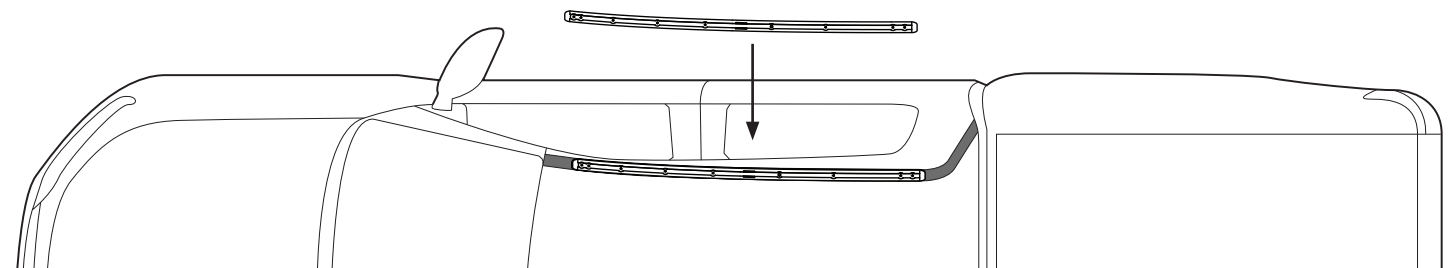
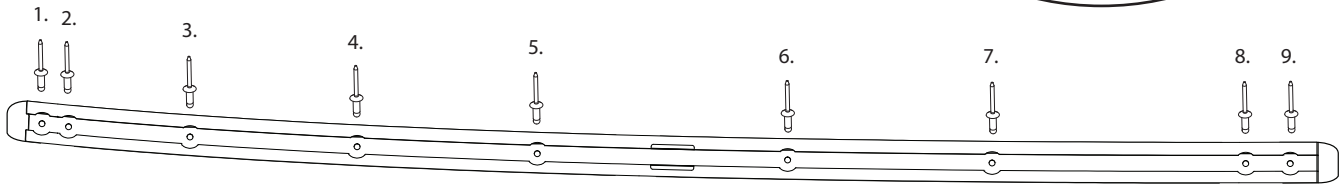
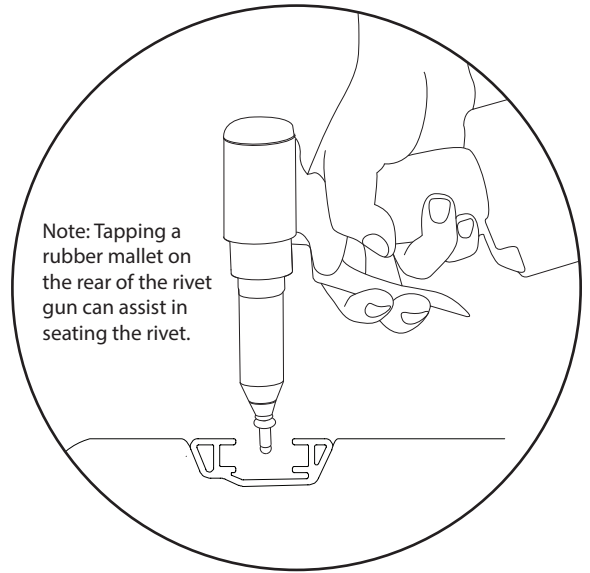
Step 10

Place the rivets into their holes on the track.



Step 11

Place the tracks back into place on the vehicle. With a rivet gun and starting at the front of the track, install each rivet in the order shown.



Step 12

The M6 channel nuts can be inserted into the cut outs as seen, ready for accessory installation.

