

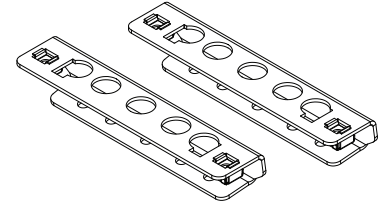


'Tradie Tuff'

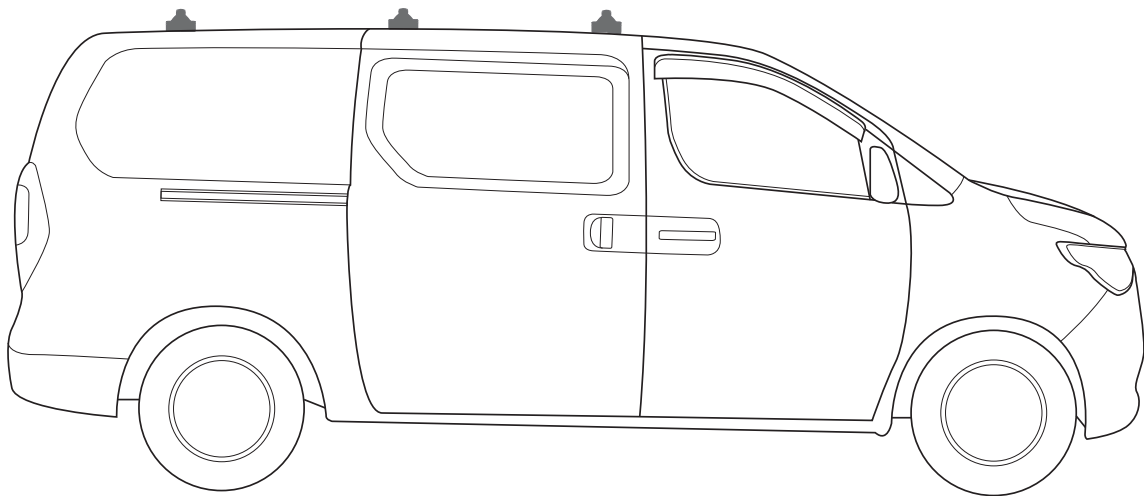
COMMERCIAL ROOF RACKS

HYUNDAI ILOAD, 2008 - ON

FIXED MOUNT



PART NUMBER: VAS.RC1007, VAS.RA1007, VAS.RC1054, VAS.RA1054, VAS.RC1127, VAS.RA1127, VAS.RC1052, VAS.RA1052, VAS.RC1128, VAS.RA1128, VAS.RC1047, VAS.RA1047, VAS.RC1129, VAS.RA1129, VAS.RC1046, VAS.RA1046, VAS.RC1130, VAS.RA1130, VAS.RC1044, VAS.RA1044.



Note:

- PLEASE READ INSTRUCTIONS AND CHECK CONTENT PRIOR TO INSTALLING.
- PLACE INSTRUCTIONS IN VEHICLES GLOVE COMPARTMENT AFTER INSTALLING.



3 Bar maximum capacity: 100kg

Tested to AS/NZS 1235-200 ADR standards

- Please check your vehicle's manual for vehicle load capacity (please do not exceed the lowest load rating) and please download and read our Load Rating guide which can be found on our website vas.com.au.
- Load rating is based on driving on sealed roads to road conditions and includes weight of roof rack system.

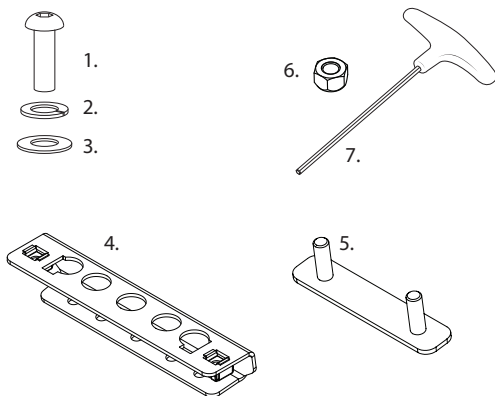
Important information

- Complete maintenance checks weekly including bolt connections and tightness.
- Heavy loads carried near feet
- Overhanging loads should conform to relevant state laws
- Check tie down strap tension every 50klm as loads can shift
- Specialised equipment carriers such as ladder slides should be used
- Ensure your roof racks, ladder rails and or load does not inhibit the tailgate lifting on vehicles manufactured with these doors
- Check car park heights before entering
- Keep load under the maximum capacity
- Use non stretch fastening straps
- Remove roof racks prior to using an automatic car wash

Note: The handling characteristics of a vehicle will change when a carrier system is fitted. Driving technique such as speed reduction, cornering techniques and braking distances should be altered to allow for these changes.

Kit Inclusions

Item	Part	3 Bar
1	M6 x 30mm Button Head Screw - F008	12
2	M6 Spring Washer - F012	12
3	M6 x 16mm Flat Washer - F011	24
4	Common Bracket - C087	6
5	M6 Twin Stud Plate - C089	6
6	M6 Nyloc Nut - F052	12
7	4mm Allen Tool - C028	1

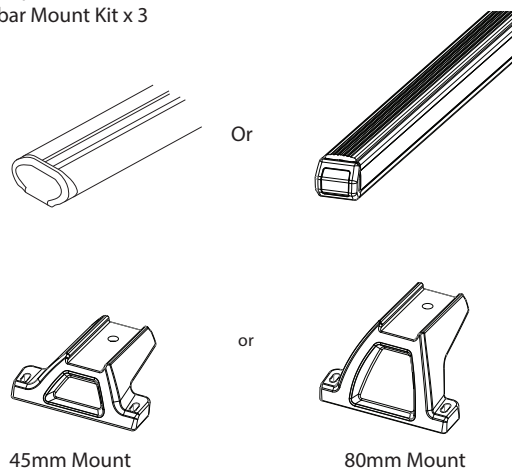


Tools Required

- 1 - 10mm Spanner.
- 2 - 4mm Allen Key.
- 3 - Butyl Mastic.
- 4 - Grinder with cutting blade.
- 5 - 3mm Drill Bit.
- 6 - 6.5mm drill bit.
- 7 - Power Drill.
- 8 - 6mm Allen Tool.
- 9 - 4mm Allen Tool (provided).

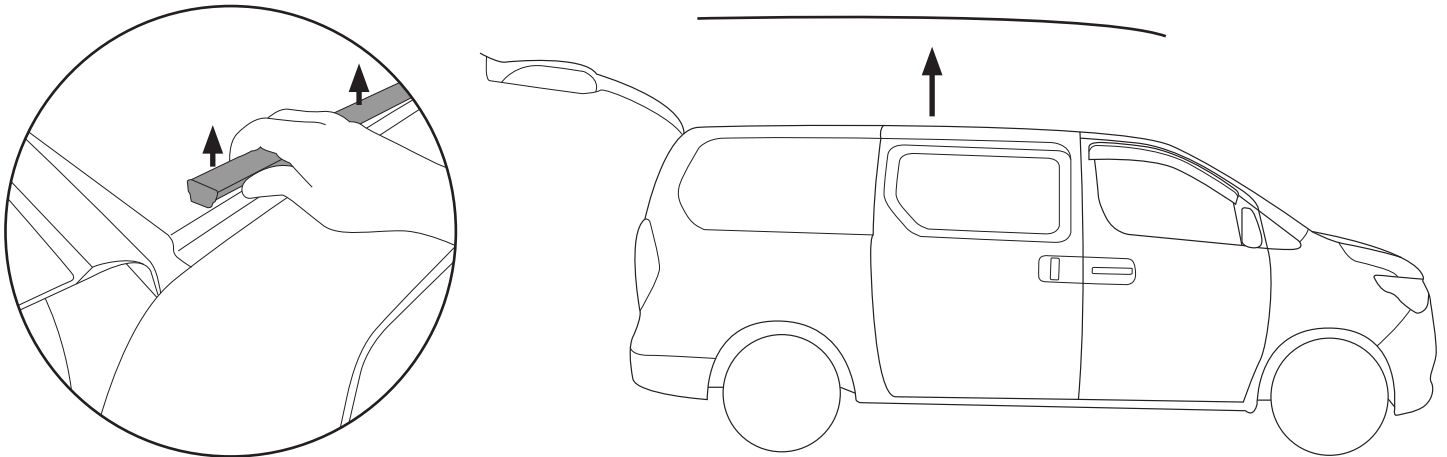
Required kits (as separate):

- Crossbar x3 1500mm
- 10mm Spacer x 6
- Crossbar Mount Kit x 3



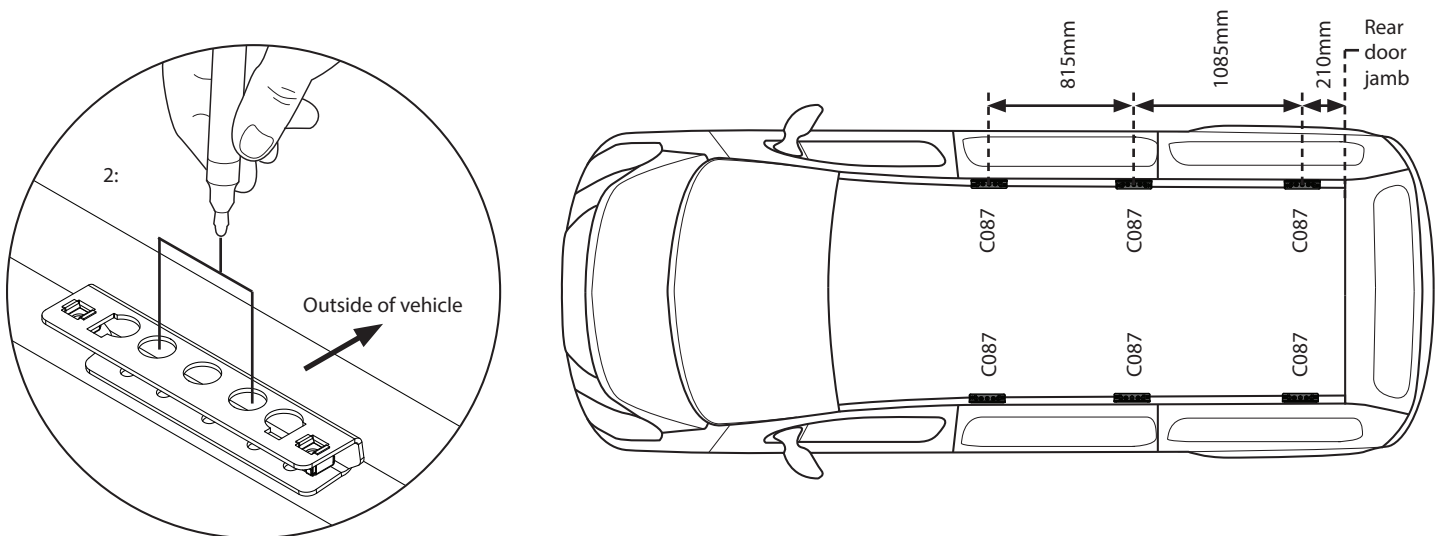
Step 1

Open the rear door of the vehicle. Move to the roof and locate the ditch fill. Starting at the rear end of the fill, carefully remove the ditch fill.



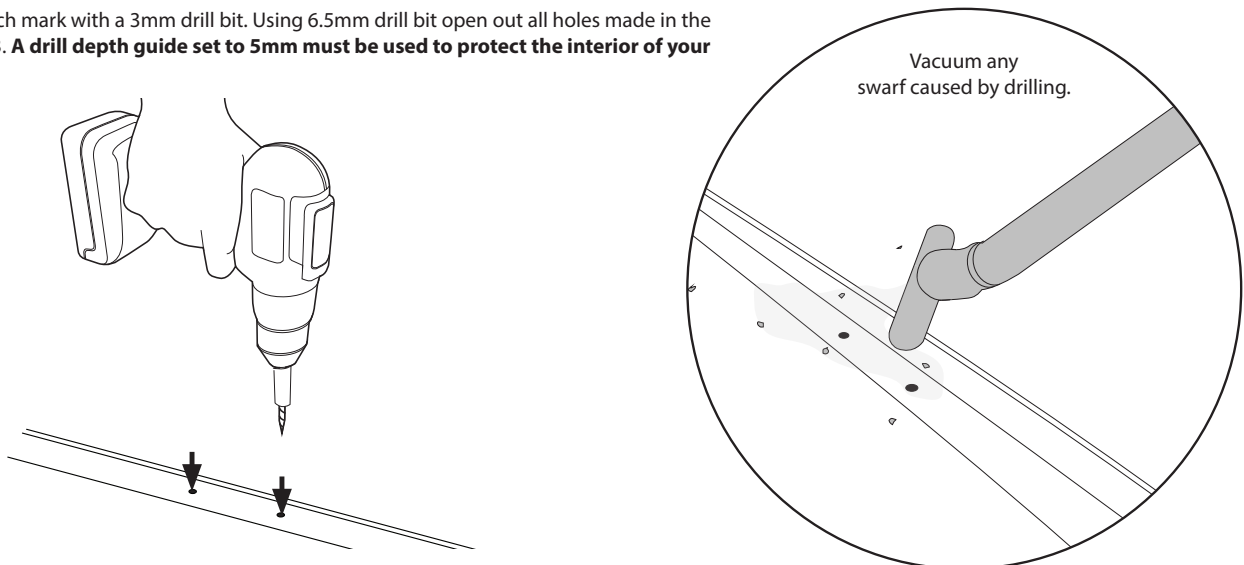
Step 2

1 - Place the brackets into the roof ditch at the measurements shown below (measurements to centre hole of bracket). 2 - With the brackets in place, mark the mounting holes into the ditch. **Be sure to not locate holes to be drilled, over spot welds in the roof.**



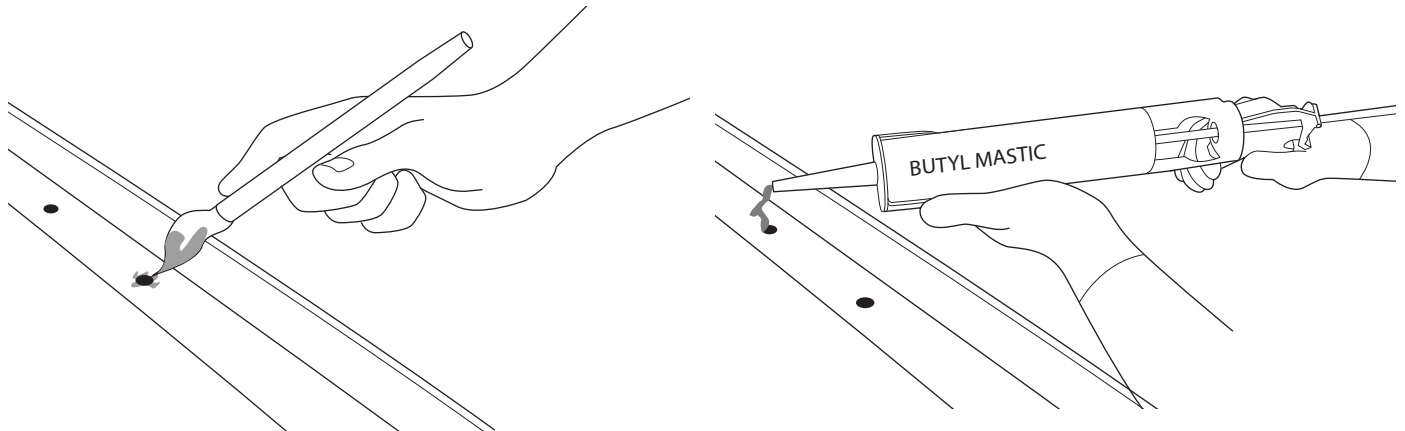
Step 3

Pilot hole each mark with a 3mm drill bit. Using 6.5mm drill bit open out all holes made in the roof in step 3. **A drill depth guide set to 5mm must be used to protect the interior of your vehicle.**



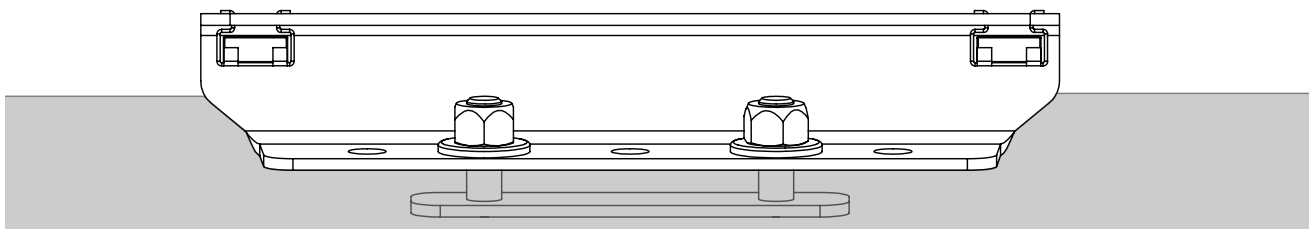
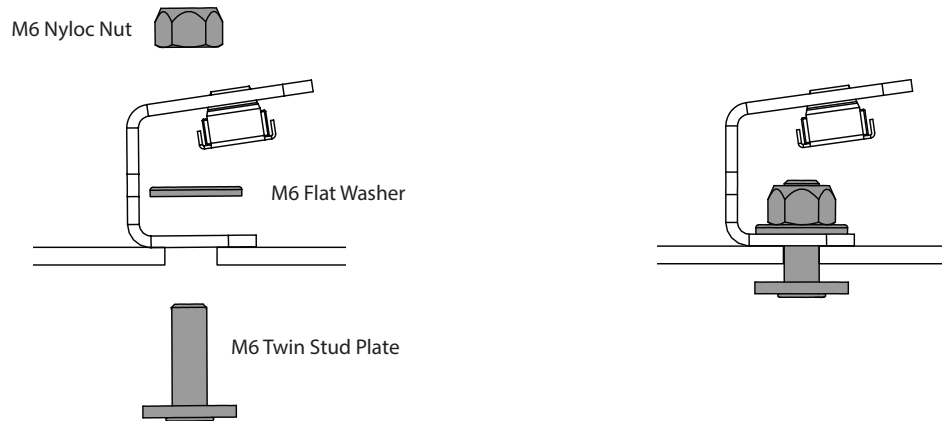
Step 4

Apply cold galvanising paint to the holes drilled. Allow time to dry. Using butyl mastic, apply a water seal to the holes drilled.



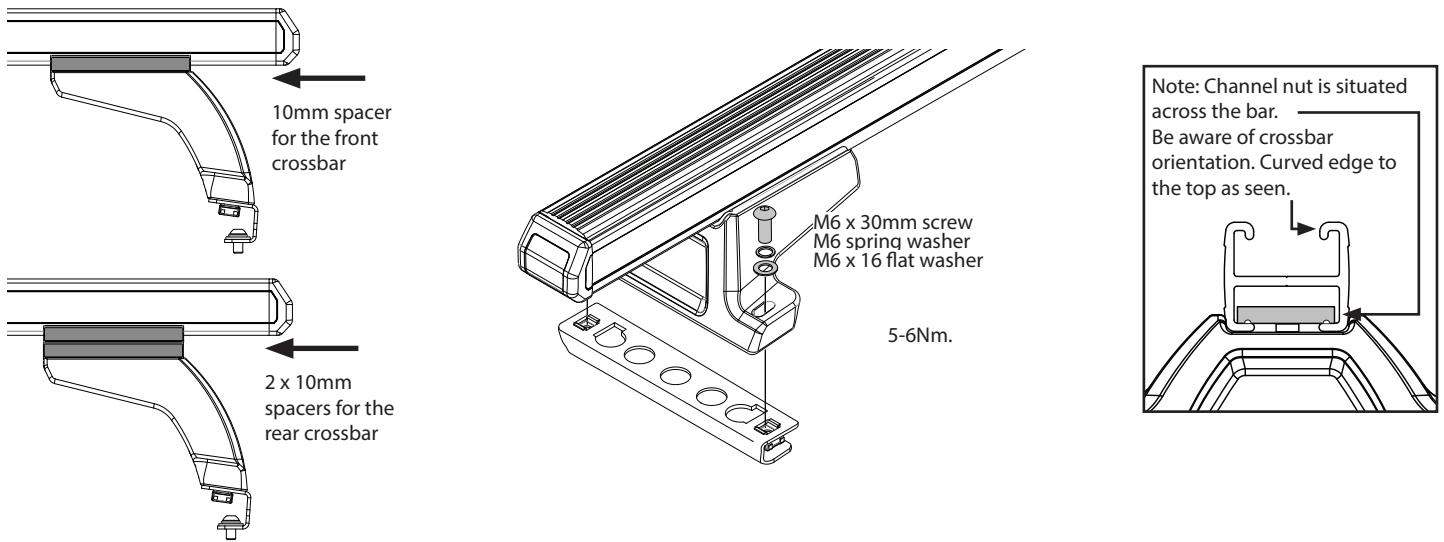
Step 5

Take a stud plate and thread it through the holes drilled from the inside of the vehicle. Place the bracket over the exposed threads of the M6 twin stud plate and tighten in place with the M6 hardware provided using a 10mm spanner.



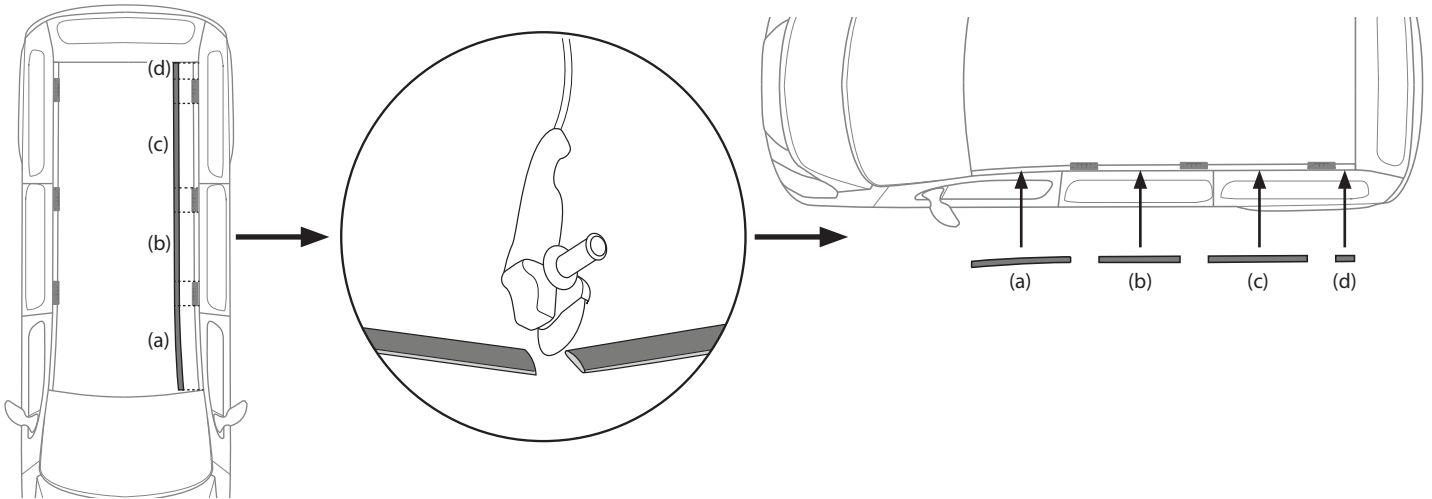
Step 6

Complete crossbar mount kits as specified in their instructions. Place the crossbars onto the installed brackets in the roof. Fix in place with the M6 hardware provided and tighten with an allen key. Note that the rear crossbars require two 10mm spacers, and one 10mm spacer will be fixed to the front crossbar.



Step 7

Lay the ditch fill next to the open ditch. Measure the distances between the installed mounts and reference them on the ditch fill with a marker. Using a grinder with a cutting blade, cut along the references made and replace the fill.



NOTE

ATTENTION:

Thoroughly check all fasteners are secure before driving away. Heights are for standard unloaded vehicles. Always check your specific vehicles height.

