

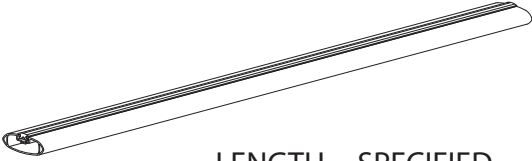
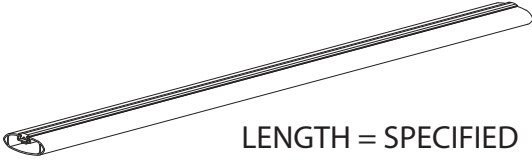
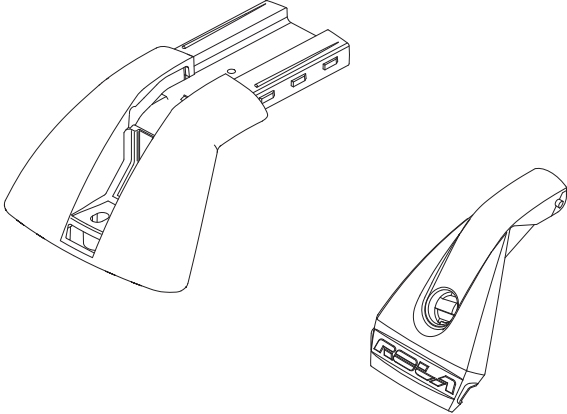
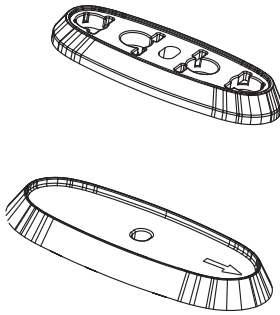
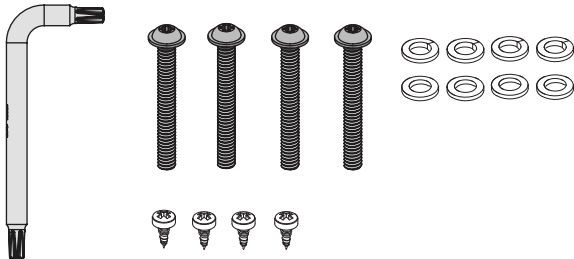


FITTING INSTRUCTION

APX SERIES - GENERIC

FITTING TIME 60 MINUTES

## 2. KIT DRAWING AND CONTENTS

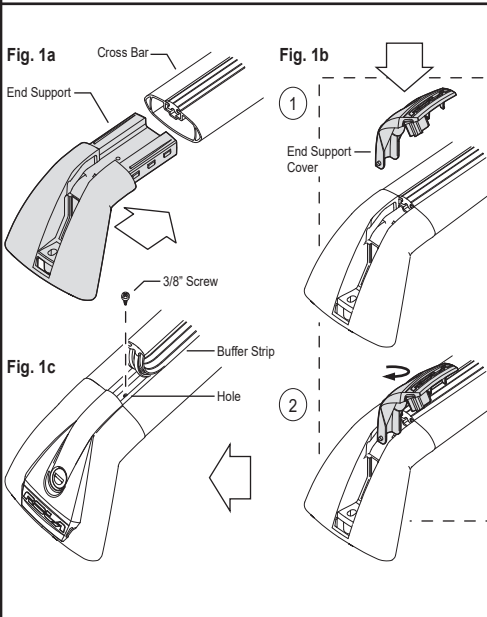
ITEM NO.	PARTS	QTY	DESCRIPTION
1	 <p data-bbox="497 448 778 481">LENGTH = SPECIFIED</p>	x1	ROOF-RACK CROSS-BAR (FRONT)
2	 <p data-bbox="497 622 778 656">LENGTH = SPECIFIED</p>	x1	ROOF-RACK CROSS-BAR (REAR)
3		<p data-bbox="919 779 954 813">x4</p> <p data-bbox="919 981 954 1014">x4</p>	<p data-bbox="1038 779 1233 846">END SUPPORT (27-0371)</p> <p data-bbox="1038 981 1334 1048">END SUPPORT COVER (25-0095)</p>
4		<p data-bbox="919 1294 954 1328">x4</p> <p data-bbox="919 1462 954 1496">x4</p>	<p data-bbox="1062 1261 1297 1328">ADAPTOR BLOCK (27-0717)</p> <p data-bbox="1062 1451 1409 1518">ADAPTOR BLOCK GASKET (27-0718)</p>
5		x1	<p data-bbox="1010 1664 1225 1697">HARDWARE KIT</p> <p data-bbox="1010 1776 1425 1809">INCLUDES A COMBINATION OF:</p> <p data-bbox="1010 1854 1417 1955">SECURITY OR ALLEN KEY TOOL BOLTS /WASHERS/SCREWS SPACERS</p>

### 3. TOOLS AND MATERIALS REQUIRED

 <p><b>Cutting Knife</b> - Use to open Kits, and trim Buffer Strip to size.</p>	 <p><b>Measuring Rule</b> - Use to check dimensions and distances of cross-bars.</p>	 <p><b>Cleaning/protective Cloth</b> - Use to wipe down vehicle, and use to protect vehicle paint.</p>	 <p><b>Marking Pencil</b> - Use to mark buffer strip.</p>	 <p><b>Phillips Head Screwdriver</b> - Use to assemble Cross Bars.</p>
--	---	---	--	---

### 4. INSTALLATION STEPS

Prior to Assembly, check that your Roof Rack Box contains all the parts as listed above. Ensure the vehicle roof is clean and dry. Use Knife to cut through the packaging polybags.



#### STEP 1

Ensure the Plug Barrels have been inserted into the End Support Covers before assembly.

Insert the End Support into the end of one of the Cross Bars (Fig. 1a).

Repeat with remaining End Supports.

Attach the End Support Cover. Insert the narrow end of the End Support cover into the top of the End Support (Fig. 1b). Twist the End Support Cover clockwise to lock it in place.

Peel back the Buffer Strip, on the Cross Bar, 30mm from the end to expose the Screw Hole in the Channel. Insert the Screw into the hole and fully tighten such that the End Support is fixed to the Cross Bar (Fig. 1c). Replace Buffer Strip. Repeat with remaining End Supports.

Fig 2

Anchor points



#### STEP 2

The roof racks are designed to use the factory anchor points - which will have one of the below to locate the anchor point

- a) Slide cover
- b) Lift cover
- c) Under trim

Please read the owner manual to identify your vehicles anchor point

a) Slide cover - A wide flat blade screwdriver is the best option to slide the cover - Apply steady pressure to the screw driver - Be careful to keep your hands clear of the screwdriver direction-

b) Lift Cover - A narrow flat blade screw driver is the best option to slide under the cover and lift

c) Under Trim - Directly above the designated anchor points mark a reference point on the weather strip - (Fig 3a).

Remove the weather strip completely from the vehicle and drill an 8mm through the weather strip at each anchor point position. Ensure the holes aligns with the anchor points on the roof of the vehicle (Fig. 3b).

Fig 3a

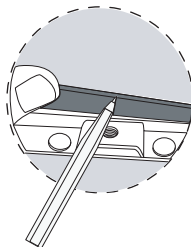


Fig 3b

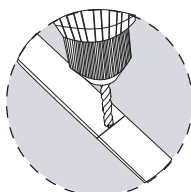
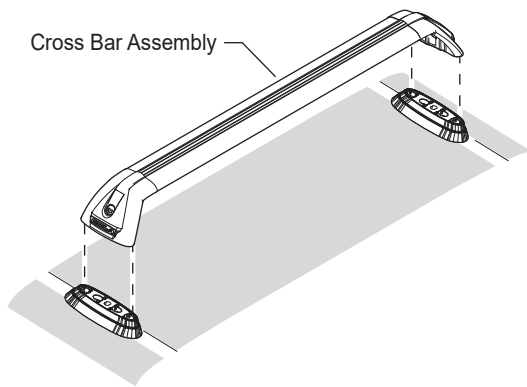


Fig 4

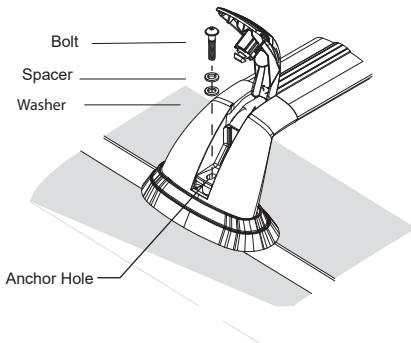


## STEP 4

Place an adaptor block and gasket onto each of the anchor point locations ensuring they line up with the anchor point holes. Repeat for all 4 positions (Fig. 4).

Place an assembled cross bar onto the corresponding base plates.

Fig 5



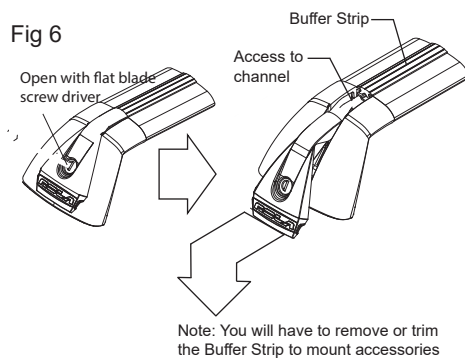
## STEP 5

Lift the End Support Covers such that the Anchor Hole is exposed. Ensure that the hole in end support lines up with the hole in the base plates and vehicle anchor point.

Loosely fit the bolt with washer and spacer if supplied as shown. (Fig. 5 ) Repeat for all 4 end supports then tighten all bolts with TT27 Assembly Key provided

Lock end support covers and store keys in a safe place.

Fig 6



## STEP 6

To load accessories into the Channel of the Cross Bars, unlock the End Support Cover (Fig. 6). Pull the Cover out and down to fully access the Channel. Once accessories have been loaded, replace the End Support Cover and lock.

## USAGE INSTRUCTIONS

It is essential for the proper assembly, operation and use of the Roof-rack that the instructions and safety precautions supplied are strictly observed. The Maximum permissible load for your Roof Bar is the lower of the maximum load capacity specified in your vehicle operation manual, or specified as applying to the Roof-rack. Do not exceed the maximum specified Load capacity.

Maximum Permissible Load = Weight of the Roof-rack + Weight of Accessories + Weight of Load(Cargo).

When fitting the Roof-rack and transporting a load, ensure the vehicle's functions are not impaired (eg. sunroof, aerials, windscreen wipers, mirrors). Rear doors on Hatch - and wagon-type vehicles should be inspected for adequate clearance for full opening operation of the boot/tailgate.

Stop and check all screw connections, bolts and retaining straps after a short distance of travel. Repeat these checks at regular intervals.

## WARNINGS

Remember that the fitting of a Roof-rack and the transport of a load increases the overall height of the carrying vehicle.

Where the roof-rack is to be used in off-road conditions, a safety weight reduction of 1.5 should be observed from the total carrying capacity (eg. 60kg becomes 40kg).

Cequent will not be liable to the purchaser of any other person for any consequential, direct or indirect loss, damage or costs incurred or suffered by the purchaser or any other person including but not limited to damage to persons or property, loss of turnover, loss of profits, loss of business or goodwill arising from or in relation to the assembly and use of the Roof-rack, or the non-observance of the fitting and care instructions.